

# Spread The Word, Finally There's A Painless Breast Scan!

By: Sherri Fawzi, Certified Clinical Thermographer  
Family Health Thermal Imaging  
Tel. (703) 635-6324 - [www.FamilyHealthTI.com](http://www.FamilyHealthTI.com)



Did you know that there is another procedure of breast screening? More women are choosing the benefits of a Thermography Scan. The Thermography scan provides earlier detection of breast disease than possible by self-examination, doctor examination or mammography alone. DITI (Digital Infrared Thermal Imaging) is a 15 minute painless test of physiology. Thermography is an essential procedure to alerting you and your doctor to changes that can indicate early stage breast disease. DITI detects the subtle physiologic changes that accompany breast pathology, such as cancer, fibrocystic disease, an infection or a vascular disease. Your doctor can then discuss a treatment plan accordingly and lay out a careful program to further diagnose and or monitor you during and after any treatment.

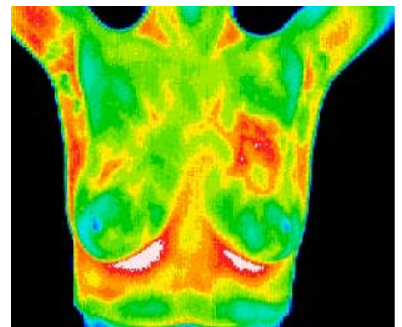
Your medical history is taken the day of the exam. The scan is radiation free and painless because it does not come into contact with the body, and it is even comfortable for women with breast implants. A subsequent session is required in three months to ensure that the thermal patterns remain unchanged. This new and exciting technology

is one of the only medical procedures that can detect inflammatory breast disease. All women can benefit from Thermography screening. However, it is especially appropriate for younger women (30-50) whose denser breast tissue makes it more difficult for mammography to be effective. This test can provide a clinical marker to the doctor or mammographer that a specific area of the breast needs particularly close examination. It takes years for a tumor to grow thus the earliest possible indication of abnormality is needed to allow for the earliest possible treatment and intervention. Digital Infrared Thermal Imaging's role in monitoring breast health is to help in early detection and monitoring of abnormal physiology. Thermologist (certified doctors) interpret the images and create a report that you can take to your local healthcare professional. You can have a scan of your breast or your whole body. Thermography can be used for so much more than just breast disease such as heart disease, stroke screening, thyroid dysfunction, digestive disorders, spinal injuries and many more disorders for both men

and women. Take charge of you health have an annual wellness scan.

One day there may be a single method for the early detection of breast cancer. Until then, use a combination of methods to increase your chances of detecting cancer in its earliest stages. Here are some steps for early detection of breast disease:

1. Have an annual Thermography scan for women of all ages.
2. Mammography, when considered appropriate for women age 50 or older.
3. A regular breast examination by a health professional.
4. Monthly breast self-examination.
5. Personal awareness for changes in the breast.
6. Readiness to quickly discuss any such changes with a doctor.



DITI Images copy right Meditherm Inc 2003

These guidelines should be considered along with your background and medical history. Thermography's role in breast cancer and other breast disorders is to help in early detection and monitoring of abnormal development or existence of cancer. When Thermography is used with other procedures, the best possible evaluation of breast health is achieved.

Check out these resources for more information about DITI:

<http://www.thermologyonline.org>, [www.familyhealthti.com](http://www.familyhealthti.com), [www.medithermclinic.com](http://www.medithermclinic.com)